

KHSAA Basketball - Game Box Score

DuPont Manual Lady Crimsons vs. Lexington Catholic Lady Knights

Date: 03/24/2001 Time: 7:00pm CST Site: Girls' Sweet 16-Diddle Arena Attendance: 3,841

Visitors: Lexington Catholic Lady Knights

| ## | Name | P | FG | 3 Pt | FT | PTS | ORB | DRB | TR | PF | AST | TO | BS | ST | MIN |
|----|--------------------|---|--------------|-------------|--------------|-----------|----------|-----------|-----------|-----------|----------|-----------|----------|----------|------------|
| 14 | * Sarah Schell | | 3/9 | 1/4 | 4/4 | 11 | 1 | 3 | 4 | 2 | 1 | 4 | 0 | 3 | 32:00 |
| 20 | * Chelsea Chowning | | 6/10 | 3/5 | 1/4 | 16 | 0 | 5 | 5 | 1 | 1 | 2 | 1 | 2 | 31:46 |
| 21 | * Katie Mendenhall | | 0/3 | 0/2 | 3/6 | 3 | 0 | 5 | 5 | 3 | 4 | 1 | 0 | 0 | 27:53 |
| 24 | * Tyler Bell | | 1/3 | 0/0 | 2/2 | 4 | 2 | 5 | 7 | 4 | 1 | 3 | 0 | 0 | 23:51 |
| 53 | * Katie Michalczyk | | 1/3 | 0/0 | 0/0 | 2 | 1 | 0 | 1 | 2 | 0 | 1 | 0 | 0 | 29:28 |
| 4 | Shelby Bell | | | | | | | | | | | | | | DNP |
| 10 | Railey Brown | | | | | | | | | | | | | | DNP |
| 23 | Kaci Hinkel | | | | | | | | | | | | | | DNP |
| 25 | Regina Carney | | 0/1 | 0/0 | 0/0 | 0 | 0 | 0 | 0 | 0 | 1 | 0 | 0 | 0 | 12:16 |
| 30 | Laura Bell | | 0/0 | 0/0 | 0/0 | 0 | 0 | 0 | 0 | 0 | 0 | 0 | 0 | 0 | 0:14 |
| 34 | Kelly Dawkins | | | | | | | | | | | | | | DNP |
| 35 | Megan Mendenhall | | | | | | | | | | | | | | DNP |
| 40 | Shannon Novosel | | 0/2 | 0/0 | 0/0 | 0 | 1 | 0 | 1 | 1 | 0 | 0 | 0 | 0 | 2:32 |
| 31 | Chelsea DiOrto | | | | | | | | | | | | | | DNP |
| 54 | Alicia Convis | | | | | | | | | | | | | | DNP |
| | Team | | | | | | 0 | 1 | 1 | | | | | | |
| | Totals | | 11/31 | 4/11 | 10/16 | 36 | 5 | 19 | 24 | 13 | 8 | 11 | 1 | 5 | 160 |

| | | | | | | | | | |
|--------------------|----------|------|-------|----------|------|-------|------|-------|-------|
| Total FG | 1st Half | 5/18 | 27.8% | 2nd Half | 6/13 | 46.2% | Game | 11/31 | 35.5% |
| 3 PT FG | 1st Half | 1/5 | 20.0% | 2nd Half | 3/6 | 50.0% | Game | 4/11 | 36.4% |
| Free Throws | 1st Half | 4/10 | 40.0% | 2nd Half | 6/6 | 100% | Game | 10/16 | 62.5% |

Home: DuPont Manual Lady Crimsons

| ## | Name | P | FG | 3 Pt | FT | PTS | ORB | DRB | TR | PF | AST | TO | BS | ST | MIN |
|----|--------------------|---|--------------|------------|------------|-----------|----------|-----------|-----------|-----------|----------|-----------|----------|----------|------------|
| 20 | * Morissa Benberry | | 0/1 | 0/0 | 0/0 | 0 | 0 | 1 | 1 | 2 | 1 | 1 | 0 | 0 | 31:31 |
| 24 | * Chelsea Thompson | | 4/8 | 2/3 | 0/0 | 10 | 0 | 1 | 1 | 1 | 2 | 1 | 1 | 0 | 20:21 |
| 32 | * Liz Plass | | 5/13 | 0/2 | 8/9 | 18 | 2 | 3 | 5 | 1 | 1 | 1 | 0 | 4 | 30:28 |
| 51 | * Chandra Brown | | 1/6 | 0/0 | 0/0 | 2 | 4 | 10 | 14 | 0 | 0 | 0 | 2 | 1 | 22:14 |
| 55 | * Sara McKemie | | 2/4 | 0/0 | 0/0 | 4 | 1 | 1 | 2 | 4 | 0 | 2 | 0 | 0 | 19:45 |
| 3 | Ashley Butler | | 0/4 | 0/1 | 0/0 | 0 | 0 | 3 | 3 | 2 | 2 | 5 | 0 | 1 | 18:44 |
| 15 | Erin Bolger | | 0/0 | 0/0 | 0/0 | 0 | 0 | 1 | 1 | 2 | 0 | 0 | 0 | 0 | 8:18 |
| 22 | Dedra McMillion | | | | | | | | | | | | | | DNP |
| 23 | Candyce Bingham | | | | | | | | | | | | | | DNP |
| 33 | Ashley Miller | | 0/1 | 0/0 | 0/0 | 0 | 0 | 0 | 0 | 0 | 0 | 0 | 0 | 0 | 8:25 |
| 34 | Ellen Doolittle | | | | | | | | | | | | | | DNP |
| 50 | Kathryn Hohmann | | | | | | | | | | | | | | DNP |
| 54 | Amy Uihman | | 0/0 | 0/0 | 0/0 | 0 | 0 | 0 | 0 | 0 | 0 | 0 | 0 | 0 | 0:14 |
| 10 | Tiffany Burton | | | | | | | | | | | | | | DNP |
| | Team | | | | | | 0 | 0 | 0 | | | 1 | | | |
| | Totals | | 12/37 | 2/6 | 8/9 | 34 | 7 | 20 | 27 | 12 | 6 | 11 | 3 | 6 | 160 |

| | | | | | | | | | |
|--------------------|----------|-------|-------|----------|------|-------|------|-------|-------|
| Total FG | 1st Half | 10/24 | 41.7% | 2nd Half | 2/13 | 15.4% | Game | 12/37 | 32.4% |
| 3 PT FG | 1st Half | 2/4 | 50.0% | 2nd Half | 0/2 | 0.00% | Game | 2/6 | 33.3% |
| Free Throws | 1st Half | 2/2 | 100% | 2nd Half | 6/7 | 85.7% | Game | 8/9 | 88.9% |

| | Lex | DuP | | Lex | DuP | | Lex | DuP |
|-------------------|------|------|-------------------|------|------|-----------------|------|------|
| Free Throw Pts | 10 | 8 | 3Pt Points | 12 | 6 | Pts/Possession | 0.67 | 0.62 |
| Pts off Turnovers | 10 | 13 | 2nd Chance Points | 2 | 6 | Pts off Bench | 0 | 0 |
| Total Rebounds | 24 | 27 | Team Rebounds | 1 | 0 | Dead Ball Reb | 1 | 0 |
| Off Rebound % | 20.0 | 26.9 | Def Rebound % | 73.1 | 80.0 | Total Rebound % | 47.1 | 52.9 |

Technical Fouls: Lex None, DuP None
 Officials: Danny Percell, Jenny Mertle, Charles Chappie

| | Qtr 1 | Qtr 2 | Qtr 3 | Qtr 4 | OT 1 | OT 2 | OT 3 | OT 4 | Total |
|---------------------------------|-------|-------|-------|-------|------|------|------|------|-------|
| Lexington Catholic Lady Knights | 6 | 9 | 12 | 9 | 0 | 0 | 0 | 0 | 36 |
| DuPont Manual Lady Crimsons | 14 | 10 | 2 | 8 | 0 | 0 | 0 | 0 | 34 |

KHSAA Basketball - Play by Play Report - Period: 1 (pg 1)
DuPont Manual Lady Crimsons vs. Lexington Catholic Lady Knights
Date: 03/24/2001 Time: 7:00pm CST Site: Girls' Sweet 16-Diddle Arena Attendance: 3,841

| ## | Name | Action | Action | Score | Clock | Diff | ## | Name | Action | Action |
|----|------------|---------------|-----------------------|-------|--------|------|----|--------------|----------------|-------------------------|
| 20 | M Benberry | Start Game | | | | | 14 | S Schell | Start Game | |
| 24 | C Thompson | Start Game | | | | | 20 | C Chowning | Start Game | |
| 32 | L Plass | Start Game | | | | | 21 | K Mendenhall | Start Game | |
| 51 | C Brown | Start Game | | | | | 24 | T Bell | Start Game | |
| 55 | S McKemie | Start Game | | | | | 53 | K Michalczyk | Start Game | |
| 51 | C Brown | Jump Ball Win | | | | | 20 | C Chowning | Jump Ball Loss | |
| 24 | C Thompson | 3Pt Made | | 3-0 | 1 7:58 | +3 | | | | |
| 24 | C Thompson | Block | 51 C Brown Def Reb | | 1 7:52 | | | | | |
| 32 | L Plass | FG Attempt | 32 L Plass Off Reb | | 1 7:42 | | 20 | C Chowning | FG Attempt | |
| 32 | L Plass | Putback Made | | 5-0 | 1 7:13 | | | | | |
| 51 | C Brown | Def Rebound | | | 1 7:10 | +5 | | | | |
| 24 | C Thompson | FG Attempt | | | 1 6:56 | | 53 | K Michalczyk | FG Attempt | |
| 24 | C Thompson | Personal Foul | | 5-1 | 1 6:47 | | 20 | C Chowning | Def Rebound | |
| 24 | C Thompson | Personal Foul | | | 1 6:33 | +4 | 20 | C Chowning | FT Made | |
| 51 | C Brown | Block | 24 C Thompson Def Reb | | 1 6:33 | | 20 | C Chowning | FT Attempt | 24 T Bell Off Reb |
| 55 | S McKemie | FG Attempt | 51 C Brown Off Reb | | 1 6:11 | | 14 | S Schell | FG Attempt | |
| 51 | C Brown | Putback Att | 51 C Brown Off Reb | | 1 5:57 | | | | | |
| 51 | C Brown | Putback Made | | 7-1 | 1 5:54 | | | | | |
| 55 | S McKemie | Personal Foul | | 7-2 | 1 5:49 | +6 | | | | |
| 51 | C Brown | Def Rebound | | | 1 5:46 | +5 | 21 | K Mendenhall | FT Made | |
| 24 | C Thompson | FG Attempt | | | 1 5:46 | | 21 | K Mendenhall | FT Attempt | |
| 20 | M Benberry | Personal Foul | | 7-3 | 1 5:20 | | 21 | K Mendenhall | Def Rebound | |
| 51 | C Brown | Def Rebound | | | 1 5:12 | +4 | 21 | K Mendenhall | FT Made | |
| 24 | C Thompson | 3Pt Made | 32 L Plass Assist | 10-3 | 1 5:12 | | 21 | K Mendenhall | FT Attempt | |
| 51 | C Brown | Steal | | | 1 5:03 | +7 | | | | |
| 55 | S McKemie | Turnover | (Traveling) | | 1 4:49 | | 24 | T Bell | Turnover | |
| | | | | | 1 4:47 | | | | | |
| | | | | | 1 4:42 | | | | | |
| | | | | 10-5 | 1 4:42 | | 25 | R Carney | Enter Game | for 24 T Bell |
| | | | | | 1 4:30 | +5 | 20 | C Chowning | Layup Made | |
| | | | | | 1 4:11 | | | | | |
| 55 | S McKemie | Turnover | (3 Sec Violation) | | 1 4:11 | | | | | |
| 3 | A Butler | Enter Game | for 55 S McKemie | | 1 3:50 | | 21 | K Mendenhall | FG Attempt | |
| 51 | C Brown | Def Rebound | | | 1 3:25 | | 14 | S Schell | Def Rebound | |
| 32 | L Plass | FG Attempt | | | 1 3:25 | | 25 | R Carney | FG Attempt | 53 K Michalczyk Off Reb |
| 51 | C Brown | Block | | | 1 3:16 | | 53 | K Michalczyk | FG Attempt | |
| 51 | C Brown | Def Rebound | | | 1 3:09 | | | | | |
| 24 | C Thompson | 3Pt Attempt | | | 1 3:05 | | | | | |
| 3 | A Butler | Personal Foul | | | 1 2:32 | | | | | |
| | | | | | 1 2:32 | | 40 | S Novosel | Enter Game | for 53 K Michalczyk |
| | | | | | 1 2:32 | +4 | 21 | K Mendenhall | FT Made | |
| 32 | L Plass | Def Rebound | | 10-6 | 1 2:32 | | 21 | K Mendenhall | FT Attempt | |
| 32 | L Plass | FT Made | | 11-6 | 1 2:23 | +5 | | | | |
| 32 | L Plass | FT Made | | 12-6 | 1 2:23 | +6 | 21 | K Mendenhall | Personal Foul | |
| | | | | | 1 2:23 | | | | | |
| | | | | | 1 2:13 | | 14 | S Schell | FG Attempt | |
| 51 | C Brown | Def Rebound | | | 1 1:56 | | 14 | S Schell | Def Rebound | |
| 3 | A Butler | FG Attempt | | | 1 1:28 | | 40 | S Novosel | FG Attempt | 40 S Novosel Off Reb |
| | | | | | 1 1:27 | | 40 | S Novosel | Putback Att | |
| 32 | L Plass | Def Rebound | | | 1 1:10 | +8 | | | | |
| 32 | L Plass | Layup Made | 3 A Butler Assist | 14-6 | 1 0:47 | | 21 | K Mendenhall | 3Pt Attempt | |
| 20 | M Benberry | Def Rebound | | | 1 0:47 | | | | | |
| 20 | M Benberry | Turnover | (Traveling) | | 1 0:14 | | | | | |
| 32 | L Plass | Def Rebound | | | 1 0:14 | | 20 | C Chowning | 3Pt Attempt | |
| | | | | | 1 0:14 | | 40 | S Novosel | Personal Foul | |
| | | | | | 1 0:14 | | | | | |
| 20 | M Benberry | Leave Game | | | 1 0:14 | | | | | |
| 24 | C Thompson | Leave Game | | | 1 0:14 | | | | | |
| 32 | L Plass | Leave Game | | | 1 0:14 | | | | | |
| 51 | C Brown | Leave Game | | | 1 0:14 | | | | | |
| 15 | E Bolger | Enter Game | for 3 A Butler | | 1 0:14 | | | | | |
| 33 | A Miller | Enter game | | | 1 0:14 | | | | | |
| 54 | A Ullman | Enter game | | | 1 0:14 | | | | | |
| 55 | S McKemie | Enter game | | | 1 0:14 | | | | | |
| 3 | A Butler | Enter game | | | 1 0:14 | | | | | |
| | | | | | 1 0:01 | | 30 | L Bell | Enter Game | for 20 C Chowning |
| | | | | | 1 0:01 | | 14 | S Schell | Personal Foul | |

End of Period Summary Lady Crimsons 14 Lady Knights 6

Largest Lead: Lady Crimsons 14 Lady Knights 6 (8 pts)
 Lead in Period: Lady Crimsons 14 Lady Knights 6 (8 pts)
 3 for 2 oppo pts
 3 for 4 pts
 5/13 for 38.5 %
 2/2 for 100 %

Turnovers
 2nd Chances
 Field Goals
 Free Throws

Lead Changes: 0 Ties: 0
 Lead Changes: 0 Ties: 0 (this period)
 1 for 0 oppo pts
 3 for 0 pts
 1/12 for 8.33 %
 4/8 for 50.0 %

KHSAA Basketball - Play by Play Report - Period: 2 (pg 1)
DuPont Manual Lady Crimsons vs. Lexington Catholic Lady Knights
 Date: 03/24/2001 Time: 7:00pm CST Site: Girls' Sweet 16-Diddle Arena Attendance: 3,841

| ## | Name | Action | Action | Score | Clock | Diff | ## | Name | Action | Action |
|----|------------|---------------|----------------------|-------|--------|------|----|--------------|-----------------|---------------------------|
| 55 | S McKernie | Leave Game | | | 2 8:00 | | | | | |
| 3 | A Butler | Leave Game | | | 2 8:00 | | | | | |
| 15 | E Bolger | Leave Game | | | 2 8:00 | | | | | |
| 33 | A Miller | Leave Game | | | 2 8:00 | | | | | |
| 24 | C Thompson | Enter Game | for 54 A Uhlman | | 2 8:00 | | | | | |
| 20 | M Benberry | Enter game | | | 2 8:00 | | | | | |
| | | | | | 2 8:00 | | 30 | L Bell | Leave Game | |
| | | | | | 2 8:00 | | 20 | C Chowning | Enter Game | for 40 S Novosel |
| | | | | | 2 8:00 | | 53 | K Michalczyk | Enter game | |
| 3 | A Butler | Enter game | | | 2 8:00 | | | | | |
| 33 | A Miller | Enter game | | | 2 8:00 | | | | | |
| 55 | S McKernie | Enter game | | | 2 8:00 | | | | | |
| | | | | | 2 7:51 | | 21 | K Mendenhall | Turnover | |
| 3 | A Butler | Steal | | | 2 7:50 | | | | | |
| 24 | C Thompson | FG Made | 3 A Butler Assist | 16-6 | 2 7:45 | +10 | | | | |
| 3 | A Butler | Def Rebound | | | 2 7:17 | | 21 | K Mendenhall | 3Pt Attempt | |
| 55 | S McKernie | Layup Made | 20 M Benberry Assist | 18-6 | 2 6:42 | +12 | | | | |
| | | | | | 2 6:42 | | | Lady Knights | 20 Sec Time Out | |
| 32 | L Plass | Enter Game | for 33 A Miller | | 2 6:42 | | | | | |
| | | | | | 2 6:33 | | 20 | C Chowning | Turnover | (Traveling) |
| 55 | S McKernie | Layup Made | 24 C Thompson Assist | 20-6 | 2 6:22 | +14 | | | | |
| | | | | 20-8 | 2 6:04 | +12 | 20 | C Chowning | FG Made | 14 S Schell Assist |
| | | | | | 2 5:38 | | 21 | K Mendenhall | Personal Foul | |
| 51 | C Brown | Enter Game | for 55 S McKernie | | 2 5:38 | | | | | |
| 51 | C Brown | FG Attempt | 51 C Brown Off Reb | | 2 5:16 | | | | | |
| 51 | C Brown | Putback Att | | | 2 5:14 | | 21 | K Mendenhall | Def Rebound | |
| 3 | A Butler | Def Rebound | | | 2 5:02 | | 14 | S Schell | 3Pt Attempt | |
| 32 | L Plass | FG Attempt | 51 C Brown Off Reb | | 2 4:44 | | | | | |
| 51 | C Brown | Putback Att | | | 2 4:42 | | 21 | K Mendenhall | Def Rebound | |
| | | | | | 2 4:33 | | 14 | S Schell | Turnover | |
| 33 | A Miller | Enter Game | for 51 C Brown | | 2 4:33 | | | | | |
| | | | | | 2 4:33 | | 24 | T Bell | Enter Game | for 25 R Carney |
| | | | | | 2 4:14 | | 21 | K Mendenhall | Personal Foul | |
| | | | | | 2 4:14 | | 25 | R Carney | Enter Game | for 21 K Mendenhall |
| 24 | C Thompson | Layup Made | | 22-8 | 2 3:51 | +14 | | | | |
| | | | | 22-11 | 2 3:38 | +11 | 14 | S Schell | 3Pt Made | 20 C Chowning Assist |
| 24 | C Thompson | FG Attempt | | | 2 2:41 | | 20 | C Chowning | Def Rebound | |
| | | | | 22-13 | 2 2:26 | +9 | 53 | K Michalczyk | Layup Made | |
| 3 | A Butler | Turnover | | | 2 1:54 | | | | | |
| | | | | | 2 1:53 | | 20 | C Chowning | Steal | |
| 3 | A Butler | Personal Foul | | | 2 1:53 | | | | | |
| 20 | M Benberry | Leave Game | | | 2 1:53 | | | | | |
| 3 | A Butler | Leave Game | | | 2 1:53 | | | | | |
| 51 | C Brown | Enter Game | for 33 A Miller | | 2 1:53 | | | | | |
| 55 | S McKernie | Enter game | | | 2 1:53 | | | | | |
| 15 | E Bolger | Enter game | | | 2 1:53 | | 20 | C Chowning | FT Attempt | Lady Knights Deadball Reb |
| | | | | | 2 1:53 | | 20 | C Chowning | FT Attempt | 24 T Bell Off Reb |
| | | | | | 2 1:51 | | 24 | T Bell | Turnover | (Traveling) |
| | | | | | 2 1:51 | | | | | |
| | | | | | 2 1:50 | | 24 | T Bell | Personal Foul | |
| 32 | L Plass | 3Pt Attempt | | | 2 1:38 | | 24 | T Bell | Def Rebound | |
| 15 | E Bolger | Personal Foul | | | 2 1:38 | | | | | |
| 20 | M Benberry | Enter Game | for 15 E Bolger | | 2 1:38 | | | | | |
| | | | | 22-15 | 2 1:15 | +7 | 14 | S Schell | FG Made | 25 R Carney Assist |
| 32 | L Plass | FG Made | 24 C Thompson Assist | 24-15 | 2 1:02 | +9 | | | | |
| | | | | | 2 0:50 | | 14 | S Schell | Turnover | |
| 32 | L Plass | Steal | | | 2 0:49 | | | | | |
| 24 | C Thompson | Turnover | | | 2 0:07 | | 14 | S Schell | Steal | |
| | | | | | 2 0:07 | | 21 | K Mendenhall | Enter Game | for 25 R Carney |
| | | | | | 2 0:07 | | | | | |

End of Period Summary Lady Crimsons 24 Lady Knights 15

Largest Lead: Lady Crimsons 20 Lady Knights 6 (14 pts)

Lead in Period: Lady Crimsons 20 Lady Knights 6 (14 pts)

2 for 0 oppo pts

2 for 0 pts

5/11 for 45.5 %

0/0 for 0.00 %

Turnovers

2nd Chances

Field Goals

Free Throws

Lead Changes: 0 Ties: 0

Lead Changes: 0 Ties: 0 (this period)

5 for 6 oppo pts

1 for 0 pts

4/6 for 66.7 %

0/2 for 0.00 %

KHSAA Basketball - Game Box Score

DuPont Manual Lady Crimson vs. Lexington Catholic Lady Knights

Date: 03/24/2001 Time: 7:00pm CST Site: Girls' Sweet 16-Diddle Arena Attendance: 3,841

| Visitors: Lexington Catholic Lady Knights | | | | | | | | | | | | | | | | |
|---|--------------------|---|-------------|------------|-------------|-----------|----------|----------|-----------|----------|----------|----------|----------|----------|-----------|--|
| ## | Name | P | FG | 3 Pt | FT | PTS | ORB | DRB | TR | PF | AST | TO | BS | ST | MIN | |
| 14 | * Sarah Schell | | 2/5 | 1/2 | 0/0 | 5 | 0 | 2 | 2 | 1 | 1 | 2 | 0 | 1 | 16:00 | |
| 20 | * Chelsea Chowning | | 2/4 | 0/1 | 1/4 | 5 | 0 | 2 | 2 | 0 | 1 | 1 | 0 | 1 | 15:46 | |
| 21 | * Katie Mendenhall | | 0/3 | 0/2 | 3/6 | 3 | 0 | 3 | 3 | 3 | 0 | 1 | 0 | 0 | 11:53 | |
| 24 | * Tyler Bell | | 0/0 | 0/0 | 0/0 | 0 | 2 | 1 | 3 | 1 | 0 | 2 | 0 | 0 | 7:51 | |
| 53 | * Katie Michalczyk | | 1/3 | 0/0 | 0/0 | 2 | 1 | 0 | 1 | 0 | 0 | 0 | 0 | 0 | 13:28 | |
| 4 | Shelby Bell | | | | | | | | | | | | | | DNP | |
| 10 | Raley Brown | | | | | | | | | | | | | | DNP | |
| 23 | Kaci Hinkel | | | | | | | | | | | | | | DNP | |
| 25 | Regina Carney | | 0/1 | 0/0 | 0/0 | 0 | 0 | 0 | 0 | 0 | 1 | 0 | 0 | 0 | 12:16 | |
| 30 | Laura Bell | | 0/0 | 0/0 | 0/0 | 0 | 0 | 0 | 0 | 0 | 0 | 0 | 0 | 0 | 0:14 | |
| 34 | Kelly Dawkins | | | | | | | | | | | | | | DNP | |
| 35 | Megan Mendenhall | | | | | | | | | | | | | | DNP | |
| 40 | Shannon Novosel | | 0/2 | 0/0 | 0/0 | 0 | 1 | 0 | 1 | 1 | 0 | 0 | 0 | 0 | 2:32 | |
| 31 | Chelsea DiOrio | | | | | | | | | | | | | | DNP | |
| 54 | Alicia Convis | | | | | | | | | | | | | | DNP | |
| | Team | | | | | 0 | 1 | 1 | | | | | | | | |
| | Totals | | 5/18 | 1/5 | 4/10 | 15 | 4 | 9 | 13 | 6 | 3 | 6 | 0 | 2 | 80 | |
| | Total FG | | 1st Half | 5/18 | 27.8% | 2nd Half | 0/0 | 0.00% | Game | 5/18 | 27.8% | | | | | |
| | 3 PT FG | | 1st Half | 1/5 | 20.0% | 2nd Half | 0/0 | 0.00% | Game | 1/5 | 20.0% | | | | | |
| | Free Throws | | 1st Half | 4/10 | 40.0% | 2nd Half | 0/0 | 0.00% | Game | 4/10 | 40.0% | | | | | |

| Home: DuPont Manual Lady Crimson | | | | | | | | | | | | | | | | |
|----------------------------------|--------------------|---|--------------|------------|------------|-----------|----------|-----------|-----------|----------|----------|----------|----------|----------|-----------|--|
| ## | Name | P | FG | 3 Pt | FT | PTS | ORB | DRB | TR | PF | AST | TO | BS | ST | MIN | |
| 20 | * Morissa Benberry | | 0/0 | 0/0 | 0/0 | 0 | 0 | 1 | 1 | 1 | 1 | 1 | 0 | 0 | 15:31 | |
| 24 | * Chelsea Thompson | | 4/8 | 2/3 | 0/0 | 10 | 0 | 1 | 1 | 1 | 2 | 1 | 1 | 0 | 15:46 | |
| 32 | * Liz Plass | | 3/7 | 0/1 | 2/2 | 8 | 1 | 3 | 4 | 0 | 1 | 0 | 0 | 1 | 14:28 | |
| 51 | * Chandra Brown | | 1/5 | 0/0 | 0/0 | 2 | 4 | 7 | 11 | 0 | 0 | 0 | 2 | 1 | 10:44 | |
| 55 | * Sara McKemie | | 2/3 | 0/0 | 0/0 | 4 | 0 | 0 | 0 | 1 | 0 | 2 | 0 | 0 | 8:18 | |
| 3 | Ashley Butler | | 0/1 | 0/0 | 0/0 | 0 | 0 | 2 | 2 | 2 | 2 | 1 | 0 | 1 | 10:18 | |
| 15 | Erin Bolger | | 0/0 | 0/0 | 0/0 | 0 | 0 | 0 | 0 | 1 | 0 | 0 | 0 | 0 | 0:29 | |
| 22 | Dedra McMillion | | | | | | | | | | | | | | DNP | |
| 23 | Candyce Bingham | | | | | | | | | | | | | | DNP | |
| 33 | Ashley Miller | | 0/0 | 0/0 | 0/0 | 0 | 0 | 0 | 0 | 0 | 0 | 0 | 0 | 0 | 4:12 | |
| 34 | Ellen Doolittle | | | | | | | | | | | | | | DNP | |
| 50 | Kathryn Hohmann | | | | | | | | | | | | | | DNP | |
| 54 | Amy Uhlman | | 0/0 | 0/0 | 0/0 | 0 | 0 | 0 | 0 | 0 | 0 | 0 | 0 | 0 | 0:14 | |
| 10 | Tiffany Burton | | | | | | | | | | | | | | DNP | |
| | Team | | | | | 0 | 0 | 0 | | | | | | | | |
| | Totals | | 10/24 | 2/4 | 2/2 | 24 | 5 | 14 | 19 | 6 | 6 | 5 | 3 | 3 | 80 | |
| | Total FG | | 1st Half | 10/24 | 41.7% | 2nd Half | 0/0 | 0.00% | Game | 10/24 | 41.7% | | | | | |
| | 3 PT FG | | 1st Half | 2/4 | 50.0% | 2nd Half | 0/0 | 0.00% | Game | 2/4 | 50.0% | | | | | |
| | Free Throws | | 1st Half | 2/2 | 100% | 2nd Half | 0/0 | 0.00% | Game | 2/2 | 100% | | | | | |

| | Lex | DuP | | Lex | DuP | | Lex | DuP |
|-------------------|--|------|-------------------|------|------|-----------------|------|------|
| Free Throw Pts | 4 | 2 | 3Pt Points | 3 | 6 | Pts/Possession | 0.45 | 0.73 |
| Pts off Turnovers | 2 | 6 | 2nd Chance Points | 0 | 4 | Pts off Bench | 0 | 0 |
| Total Rebounds | 13 | 19 | Team Rebounds | 1 | 0 | Dead Ball Reb | 1 | 0 |
| Off Rebound % | 22.2 | 35.7 | Def Rebound % | 64.3 | 77.8 | Total Rebound % | 40.6 | 59.4 |
| Technical Fouls | Lex | None | | | | | | |
| | DuP | None | | | | | | |
| Officials | Danny Percell, Jenny Mertle, Charles Chappie | | | | | | | |

| | Qtr 1 | Qtr 2 | Qtr 3 | Qtr 4 | OT 1 | OT 2 | OT 3 | OT 4 | Total |
|---------------------------------|-------|-------|-------|-------|------|------|------|------|-------|
| Lexington Catholic Lady Knights | 6 | 9 | 0 | 0 | 0 | 0 | 0 | 0 | 15 |
| DuPont Manual Lady Crimson | 14 | 10 | 0 | 0 | 0 | 0 | 0 | 0 | 24 |

KHSAA Basketball - Play by Play Report - Period: 3 (pg 1)
 DuPont Manual Lady Crimsons vs. Lexington Catholic Lady Knights
 Date: 03/24/2001 Time: 7:00pm CST Site: Girls' Sweet 16-Diddle Arena Attendance: 3,841

| ## Name | Action | Action | Score | Clock | Diff | ## Name | Action | Action |
|---------------|---------------|----------------------|-------|--------|---------|-----------------|---------------|------------------------|
| 3 A Butler | Enter Game | for 55 S McKemie | | 3 8:00 | | | | |
| 32 L Plass | Turnover | | 24-17 | 3 7:41 | | | | |
| 32 L Plass | FG Attempt | | | 3 7:25 | +7 | 24 T Bell | FG Made | 21 K Mendenhall Assist |
| | | | | 3 6:48 | | 24 T Bell | Def Rebound | |
| 32 L Plass | Steal | | | 3 6:20 | | 53 K Michalczyk | Turnover | |
| | | | | 3 6:19 | | | | |
| 55 S McKemie | Enter Game | for 51 C Brown | | 3 5:55 | | 24 T Bell | Personal Foul | |
| 3 A Butler | FG Attempt | | | 3 5:55 | | | | |
| 3 A Butler | Def Rebound | | | 3 5:38 | | 21 K Mendenhall | Def Rebound | |
| 3 A Butler | Turnover | (Traveling) | | 3 5:11 | | 14 S Schell | 3Pt Attempt | |
| | | | 24-19 | 3 5:09 | +5 | 20 C Chowning | FG Made | 21 K Mendenhall Assist |
| 55 S McKemie | Layup Att | 55 S McKemie Off Reb | | 3 4:42 | | | | |
| 3 A Butler | FG Attempt | | | 3 4:01 | | 20 C Chowning | Def Rebound | |
| 55 S McKemie | Def Rebound | | | 3 3:46 | | 24 T Bell | FG Attempt | |
| 3 A Butler | 3Pt Attempt | | | 3 3:36 | | 21 K Mendenhall | Def Rebound | |
| 51 C Brown | Enter Game | for 24 C Thompson | | 3 3:27 | | | | |
| | | | 24-22 | 3 3:25 | | 20 C Chowning | 3Pt Made | 21 K Mendenhall Assist |
| | | | | 3 3:00 | +2 | 20 C Chowning | Personal Foul | |
| | | | | 3 2:43 | | | | |
| | | | | 3 2:42 | | 53 K Michalczyk | Personal Foul | |
| 3 A Butler | Turnover | | | 3 2:37 | | | | |
| | | | | 3 2:37 | | 14 S Schell | Steal | |
| 55 S McKemie | Personal Foul | | | 3 2:37 | | | | |
| 15 E Bolger | Enter Game | for 3 A Butler | | 3 2:37 | | | | |
| | | | 24-23 | 3 2:37 | +1 | 14 S Schell | FT Made | |
| | | | 24-24 | 3 2:37 | (T1) | 14 S Schell | FT Made | |
| 32 L Plass | FG Made | | 26-24 | 3 2:28 | +2 | | | |
| 51 C Brown | Def Rebound | | | 3 1:58 | | 24 T Bell | FG Attempt | |
| | | | | 3 1:41 | | 14 S Schell | Personal Foul | |
| 32 L Plass | FG Attempt | | | 3 1:29 | | 24 T Bell | Def Rebound | |
| | | | 26-27 | 3 0:58 | -1 (L1) | 20 C Chowning | 3Pt Made | 24 T Bell Assist |
| 20 M Benberry | FG Attempt | | | 3 0:10 | | 24 T Bell | Def Rebound | |

End of Period Summary Lady Crimsons 26 Lady Knights 27

Largest Lead: Lady Crimsons 20 Lady Knights 6 (14 pts)
 Lead in Period: Lady Crimsons 24 Lady Knights 15 (9 pts)
 3 for 6 oppo pts
 1 for 0 pts
 1/8 for 12.5 %
 0/0 for 0.00 %

Turnovers
 2nd Chances
 Field Goals
 Free Throws

Lead Changes: 1 Ties: 1
 Lead Changes: 1 Ties: 1 (this period)
 1 for 0 oppo pts
 0 for 0 pts
 4/7 for 57.1 %
 2/2 for 100 %

KHSAA Basketball - Play by Play Report - Period: 4 (pg 1)
DuPont Manual Lady Crimsons vs. Lexington Catholic Lady Knights
 Date: 03/24/2001 Time: 7:00pm CST Site: Girls' Sweet 16-Diddle Arena Attendance: 3,841

| ## | Name | Action | Action | Score | Clock | Diff | ## | Name | Action | Action |
|---------------|-----------------|--------------------|--------------------|-------|--------|---------|--------------|-----------------|---------------|------------------------|
| 15 | E Bolger | Def Rebound | | | 4 7:35 | | 20 | C Chowning | 3Pt Attempt | |
| 32 | L Plass | FT Made | | 27-27 | 4 7:27 | (T2) | 24 | T Bell | Personal Foul | |
| 32 | L Plass | FT Attempt | | | 4 7:27 | | 20 | C Chowning | Def Rebound | |
| | | | | | 4 6:31 | | 14 | S Schell | Turnover | |
| 32 | L Plass | FG Attempt | 32 L Plass Off Reb | | 4 6:16 | | 53 | K Michalczyk | Personal Foul | |
| | | | | | 4 6:16 | | | | | |
| 33 | A Miller | Enter Game | for 55 S McKemie | | 4 6:16 | | | | | |
| 32 | L Plass | FT Made | | 28-27 | 4 6:16 | +1 (L2) | | | | |
| 32 | L Plass | FT Made | | 29-27 | 4 6:16 | +2 | | | | |
| 51 | C Brown | Def Rebound | | | 4 5:52 | | 14 | S Schell | 3Pt Attempt | |
| Lady Crimsons | Turnover | (10 Sec Violation) | | | 4 5:43 | | | | | |
| | | | | | 4 5:31 | | 14 | S Schell | Turnover | (Traveling) |
| | | | | | 4 4:48 | | 24 | T Bell | Def Rebound | |
| 51 | C Brown | FG Attempt | | | 4 4:48 | | | | | |
| 32 | L Plass | Personal Foul | | | 4 4:48 | | | | | |
| 55 | S McKemie | Enter Game | for 51 C Brown | | 4 4:48 | | | | | |
| | | | | 29-30 | 4 4:20 | -1 (L3) | 20 | C Chowning | 3Pt Made | 21 K Mendenhall Assist |
| 33 | A Miller | FG Attempt | | | 4 4:01 | | 20 | C Chowning | Block | 20 C Chowning Def Reb |
| 15 | E Bolger | Personal Foul | | | 4 3:03 | | | | | |
| 3 | A Butler | Enter Game | for 33 A Miller | | 4 3:03 | | | | | |
| | | | | | 4 3:00 | | | | | |
| | | | | | 4 2:48 | | Lady Knights | 20 Sec Time Out | | |
| 51 | C Brown | Enter Game | for 15 E Bolger | | 4 2:48 | | | | | |
| | | | | | 4 2:22 | | Lady Knights | Time Out | | |
| | | | | | 4 2:13 | | | | | |
| 20 | M Benberry | Personal Foul | | | 4 2:04 | | | | | |
| 55 | S McKemie | Personal Foul | | | 4 2:04 | | | | | |
| Lady Crimsons | Time Out | | | | 4 2:04 | -2 | 24 | T Bell | FT Made | |
| | | | | 29-31 | 4 2:04 | -3 | 24 | T Bell | FT Made | |
| | | | | 29-32 | 4 1:54 | | 14 | S Schell | Def Rebound | |
| 32 | L Plass | 3Pt Attempt | | | 4 1:42 | | 20 | C Chowning | Turnover | |
| | | | | | 4 1:40 | | | | | |
| 32 | L Plass | Steal | | | 4 1:38 | -1 | | | | |
| 32 | L Plass | Layup Made | | 31-32 | 4 1:26 | | | | | |
| 55 | S McKemie | Personal Foul | | | 4 1:26 | | | | | |
| Lady Crimsons | Time Out | | | | 4 1:26 | -2 | 14 | S Schell | FT Made | |
| | | | | 31-33 | 4 1:26 | -3 | 14 | S Schell | FT Made | |
| | | | | 31-34 | 4 1:18 | | | | | |
| 3 | A Butler | Turnover | | | 4 1:15 | | 20 | C Chowning | Steal | |
| | | | | | 4 1:15 | | Lady Knights | Time Out | | |
| | | | | | 4 1:02 | | 24 | T Bell | Turnover | |
| | | | | | 4 1:01 | | | | | |
| 32 | L Plass | Steal | | | 4 1:00 | -2 | 24 | T Bell | Personal Foul | |
| 32 | L Plass | FT Made | | 32-34 | 4 1:00 | -1 | | | | |
| 32 | L Plass | FT Made | | 33-34 | 4 1:00 | (T3) | | | | |
| 32 | L Plass | FT Made | | 34-34 | 4 1:00 | | | | | |
| Lady Crimsons | 20 Sec Time Out | | | | 4 1:00 | | | | | |
| 33 | A Miller | Enter Game | for 55 S McKemie | | 4 0:49 | | 20 | C Chowning | Layup Att | |
| 51 | C Brown | Def Rebound | | | 4 0:37 | | | | | |
| 3 | A Butler | Turnover | | | 4 0:35 | | 14 | S Schell | Steal | |
| | | | | | 4 0:00 | | 14 | S Schell | FG Attempt | 14 S Schell Off Reb |
| | | | | 34-36 | 4 0:00 | -2 | 14 | S Schell | Putback Made | |

End of Period Summary Lady Crimsons 34 Lady Knights 36

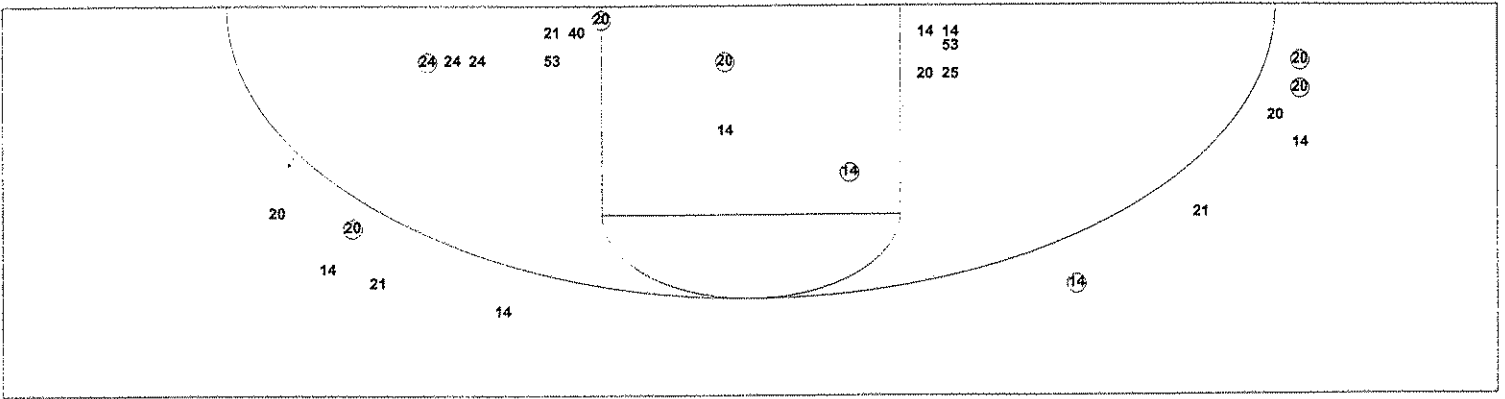
Largest Lead: Lady Crimsons 20 Lady Knights 6 (14 pts)
Lead in Period: Lady Crimsons 29 Lady Knights 32 (3 pts)

3 for 2 oppo pts
1 for 2 pts
1/5 for 20.0 %
6/7 for 85.7 %

Turnovers
2nd Chances
Field Goals
Free Throws

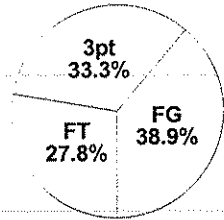
Lead Changes: 3 Ties: 3
Lead Changes: 1 Ties: 2 (this period)
4 for 7 oppo pts
1 for 2 pts
2/6 for 33.3 %
4/4 for 100 %

KHSAA Basketball - TEAM SHOT CHART for the Lady Knights
DuPont Manual Lady Crimson vs. Lexington Catholic Lady Knights
DATE: 03/24/2001 TIME: 7:00pm CST SITE: Girls' Sweet 16-Diddle Arena

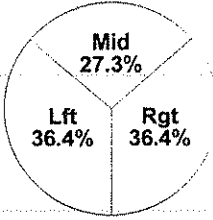


| Shot Summary | M/A | % | PTS |
|------------------|-------|--------|-----|
| 3Pt FG | 4/11 | 36.4% | 12 |
| 2Pt FG | 7/20 | 35.0% | 14 |
| Layups - L | 1/2 | 50.0% | 2 |
| Layups - R | 1/1 | 100.0% | 2 |
| Dunks | 0/0 | 0.0% | 0 |
| Putbacks | 1/2 | 50.0% | 2 |
| Overall Shooting | 11/31 | 35.5% | 26 |
| Free Throws | 10/16 | 62.5% | 10 |
| Total Points | | | 36 |

Scoring Distribution

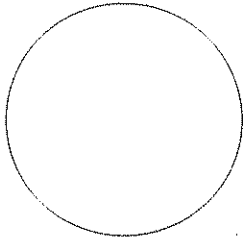


Scoring Locations



| By Period | FG | FGA | FG% | 3Pt | 3PA | 3P% | FT | FTA | FT% | PTS | ORB | DRB | TR | PF | AST | TO | BS | ST | P/S |
|------------|----|-----|------|-----|-----|------|----|-----|------|-----|-----|-----|----|----|-----|----|----|----|------|
| 1st Period | 1 | 12 | 8.33 | 0 | 2 | 0.00 | 4 | 8 | 50.0 | 6 | 3 | 5 | 8 | 3 | 0 | 1 | 0 | 0 | 0.38 |
| 2nd Period | 4 | 6 | 66.7 | 1 | 3 | 33.3 | 0 | 2 | 0.00 | 9 | 1 | 4 | 5 | 3 | 3 | 5 | 0 | 2 | 1.29 |
| 3rd Period | 4 | 7 | 57.1 | 2 | 3 | 66.7 | 2 | 2 | 100 | 12 | 0 | 6 | 6 | 4 | 4 | 1 | 0 | 1 | 1.50 |
| 4th Period | 2 | 6 | 33.3 | 1 | 3 | 33.3 | 4 | 4 | 100 | 9 | 1 | 4 | 5 | 3 | 1 | 4 | 1 | 2 | 1.13 |
| Game | 11 | 31 | 35.5 | 4 | 11 | 36.4 | 10 | 16 | 62.5 | 36 | 5 | 19 | 24 | 13 | 8 | 11 | 1 | 5 | 0.92 |

Scoring Breakdown



Scoring Range

